

Pumpkin double din car audio - Huge 42 % off sale

pumpkin



800MHz A11
& Latest Wince 6.0 System

**THE FASTEST
WINCE CAR DVD RADIO**



The Pumpkin car multimedia system features an innovative design with highly sensitive full touch HD capacitive touchscreen monitor, a user-friendly interface and modern functions designed for your comfort and entertainment during rides. From listening to your favorite tunes or audio apps, keeping your kids busy during long drives with a movie, taking important calls, navigating to the place you want to go with the intelligent voice assist function or even making sure your parking is safe and fast, this double din Bluetooth car radio receiver will instantly become your favorite gadget!

Need Support?

When it comes to our customer's satisfaction, there's no room for compromise. If by some reason you're not entirely pleased with your purchase or you have any confusion about installation or use, Our customer care department has got you covered ! (Email: autopumpkin@gmail.com / onlinestore@autopumpkin.com).

Still Not Convinced? Here are some of the amazing features of this product:

- The latest Wince 6.0 system with 800MHz CPU, the performance has been improved to more stable and faster.
- Digital Screen Resolution: 800*480, Supports 720P RMVB format video, Supports SD card/ USB drive up to 32GB.
- Supports GPS Navigation, come with 16GB map SD card, support voice guidance, dual-zone function, you can listen to music/radio while navigating.
- Supports Original car steering wheel control, Support Rear Camera for safely backing your car (camera not included), 7 colors button light, built-in radio tuner, support DVD
- Supports Bluetooth call/audio play, Sync phonebook, external microphone for more clear Bluetooth phone calls.

The Ultimate Entertainment Unit for Your Everyday Needs!

- Drive Safer and Smarter with Build-in GPS navigation
- Latest Phone Mirror-Link Technology
- HD full Touch Screen & HD video playback
- Bluetooth Connectivity- Great for Safety & Entertainment
- Multi-color LED Backlight
- Premium AM/FM Radio
- Pre-Amp and Subwoofer Output

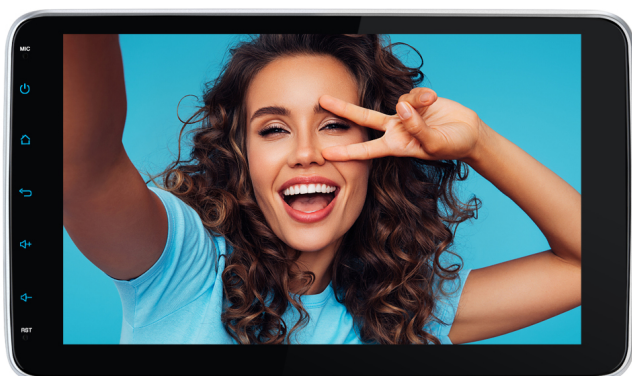
Now, it only needs **\$159.99**, which is offering **42%** off discount. Take a look at this [double din head unit](#).

Best Android Auto head unit for 2021 - Pumpkin

Android10

PUMPKIN CAR STEREO

PX30
10.1"



Install is easy as long as you have some level of electrical experience and can follow wiring schematics. Wires are all marked and was a very straightforward install.

Touchscreen is extremely responsive and processor seems to be pretty quick since I can transition screens with no lag.

<https://blog.autopumpkin.com/wp-content/uploads/2021/09/1.mp4>

Large user interface and screen that's very intuitive to navigate. Internal amp from stereo is just decent so don't expect the sound you would get from a name brand stereo. Get an external amp with subs if you're looking for quality sound. Although, the sound alone from the unit isn't bad. Just depends on how loud you want the stereo and I'm fine with the out of the box sound.

Tech support is easily accessed, they are knowledgeable and

quick to respond. Well beyond any company I've dealt with in the last 10 years. They have several YouTube videos posted showing how to use several features. Rarely am I impressed with or even recommend anything, but I am impressed and do recommend this car stereo.

Overall, the [android car stereo](#) is worth the money and a great bang for your buck!

Car stereo reviews: the best double-DIN head units 2021



I've been running a pretty custom PT Cruiser for several years now with a cheap Android Double DIN unit, and the touch display was truly atrocious. In a fit of rage with ghost touches I slapped the screen too hard and shattered it, so had to buy a new unit. Did a little looking, and [the pumpkin android 10 head unit](#) seemed to fit the bill perfectly so I went ahead and ordered it around 1:30am. Arrived at 3pm NEXT DAY.

Took out the old unit, removed the old wiring harness and wired this one in. Install took approx 90mins as I am pretty thorough, I soldered all the connections to the Metra harness for my car. I also took the time to cable manage a little, and do a new run for the WiFi antenna under my dash. I have this unit outputting to 2 amps. I have an amp in the trunk powering 2x12" Kicker CompR's, and I have a 4 channel amp under the passenger seat for the 6x9's in the doors and rear deck. Hooked up my existing backup cam with no issue. They provide a lot of additional connectors, screws and mounts.

Once it was all installed, I threw the SD card in from my old unit and did some BASIC setup of a few apps. I was absolutely blown away by the touch screen and the system. My experience of Android units over the last 4-5 years or so is always the touch screen is bad. This one is not. This is like a mid-premium tablet, it's very snappy and responsive. No lag. I wish I had upgraded sooner. The WiFi and GPS is significantly stronger than the old unit too. I cannot speak to the audio quality via speakers since my amplifiers do the heavy lifting here, but the audio sent to the amps is crystal clear and sounds great. I no longer have bluetooth streaming issues when using BT Audio. It's a strong and capable unit.

I was hesitant about purchasing due to 0 reviews, but the specs looked good and I checked out other [Pumpkin unit](#) reviews to get an idea of brand quality, and thought I'd take the plunge knowing I could return it. Good news is, I won't be unless something catastrophic happens. If you're on the fence, you really should give this unit a chance. It's solid. Build quality is good, device specs are good, responsive, and very capable. Has 2 SD slots too, so you can load up on music/movies/media.
