

What is MirrorLink?

For those of whom want to utilize the best of your phone features with the car stereo, you need to notice the MirrorLink function that car stereos offer. MirrorLink makes it easy to bring the application of your phones to the car dashboard. MirrorLink is a way of 'mirroring' whatever is on your smartphone onto your car stereo display. No matter movies or maps, that all can be achieved with screen mirroring.

Our car stereos use a MirrorLink application called 'EasyConnection'. It is a driving assistant. This App integrates navigation, music, telephone, and other driving functions, you can also add your favorite applications to this App. With the interconnection of EasyConnection App on the navigator, the screen of the mobile phone can be projected onto the navigator screen and can be operated on the navigator screen. Any application can be made to work with MirrorLink, but not all applications should be used while driving. For example, you shouldn't play games or watch a movie while driving.



How does your screen mirror your phone to your car stereo? It is quite easy. Just open the EasyConnection application both on your car stereo and your phone. Then, choose the connect way you want on the car stereo. After connected, the apps will run on your smartphone while will be displayed on the car stereo monitor.

Customer Review on Pumpkin

AA0341B Android 9.0 Single DIN Flip out Car Stereo

I am really pleased with the radio, it can do so much and so well and so quickly, great product, I really have to praise it. Another thing about the radio, the installation on my car Seat Arosa H6 1998 was very easy, and so far everything works perfectly.

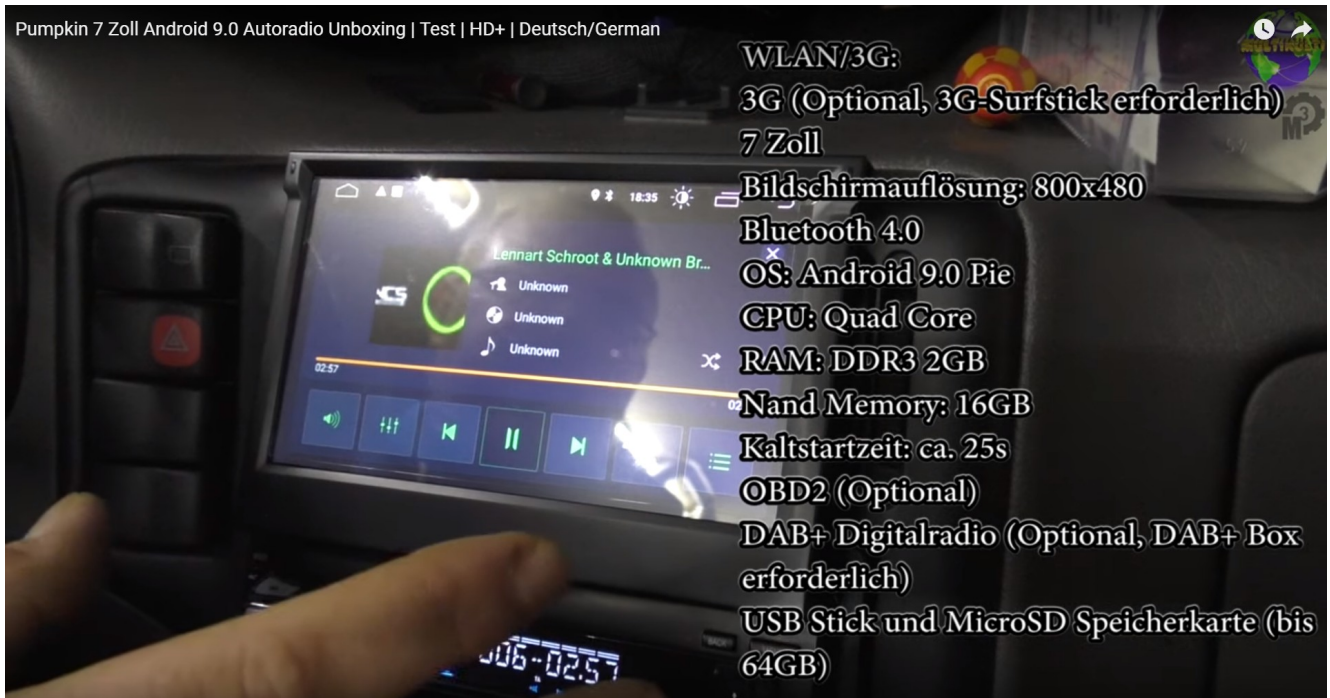
Here are some of the features of this car radio.

1. Flip-out screen: that looks pretty cool, you can also retract the monitor and continue playing the music.
2. USB/SD: it supports both the micro SD card and USB.
3. Menu: there are buttons on the panel, with the buttons, you can go to the main menu and control the volume.
4. Multi-color button: when turning on my car key, the buttons light up and they can be changed color.
5. Audio setting: you can use the slider to change the position of the box and other settings such as volume, EQ-3, bass, balance, VIP.
6. Radio: unfortunately we are now in the garage so it can not find anything here.
7. Video function: you can watch music videos, movies, and YouTube videos.
8. Bluetooth: after you paired your mobile phone to the radio, you can make a phone call and listen to music.
9. Navigation: I will show it works in the later video.
10. In the menu, you can see and set the WiFi/ Internet, auto settings, apps & notifications, storage, RAM, users and

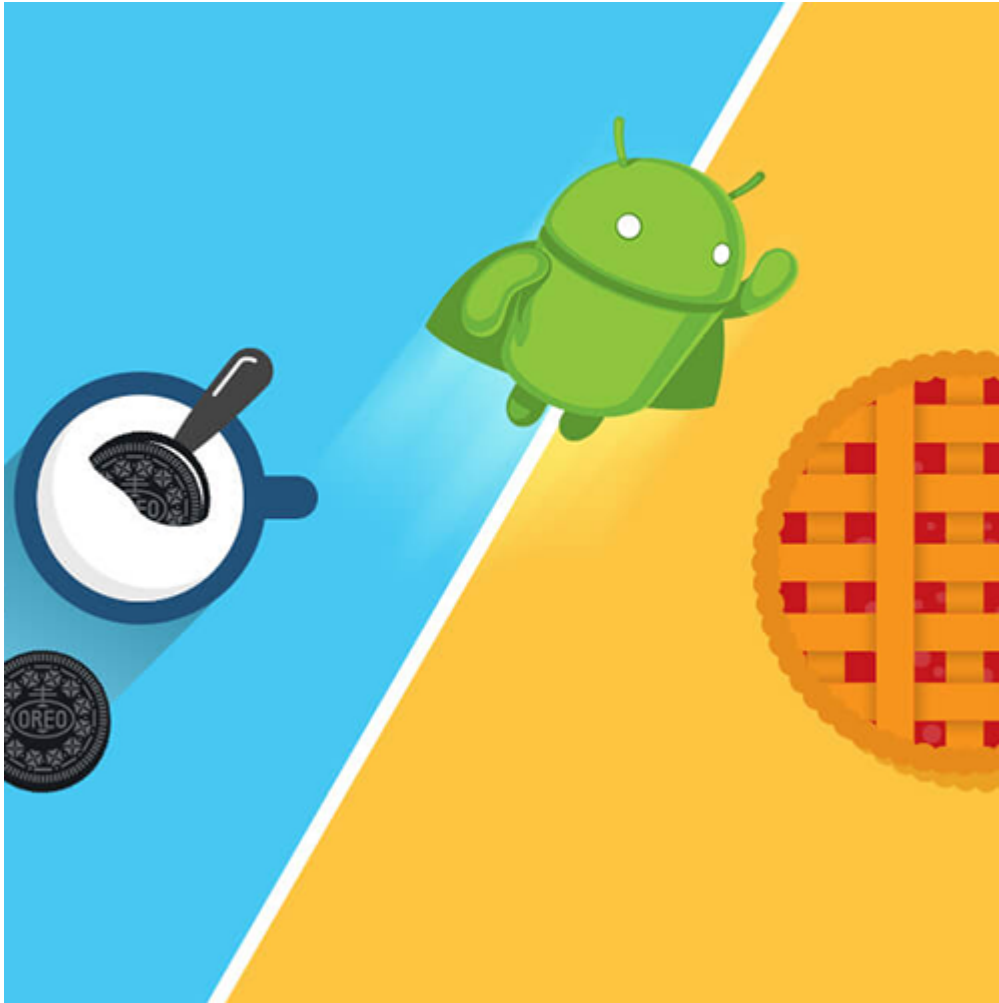
accounts, Google account and system, etc.

11. You can end all the apps once like mobile phones close everything.

12. We all know that watching movies while driving is forbidden, but it can fade in up and then the movie will run up there but the whole menu will have it. It's pretty awesome.



What's the difference of Android 8.0 and Android 9.0 car stereo?



Android was released to the public for more than 10 years. The latest version is Android 9.0 now. The focal points of this latest Android version are its intelligence, simplicity, and a heap of new, advanced and convenient features. Android 9.0 is also the latest version in the Android car stereo. But what's new compared to Android 8.0? Let's run down some of the most important changes in Android Pie car stereos.

Android 8.0 Oreo



PUMPKIN CAR STEREO Android 9.0



1.Name

Android 8.0 is officially named Oreo, Android 9.0 is officially named "Pie".

2.Interface optimization

Compared to Android 8.0, Android 9.0 is more stripped-back now. The Android Pie is more colorful, with more curves for the system. And the edges have been softened.

3.Respond speed

Android 9.0 improves response speed a bit so that Android 9.0 car stereos can run smoothly and bring a quick response.

4.Software compatibility

Compared to Android 8.0, Android 9.0 can be compatible with more software. So it will not cause many software incompatibilities, flashbacks, etc.

5.System functions

Android 9.0 has added new features, like Google unified push upgrade, deep integration with Project Treble mode, more

closed and native support for call recording, etc. But maybe some features can not be used on car stereos.
