

# [Installation] Pumpkin 7" Single Din Bluetooth Car Stereo with Flip Screen Navigation install on Volvo XC70 year 2002

Here, we show how to install the 7-inch single din flip-out screen car radio in the Volvo XC70 year 2002. This is a universal car radio, it integrates with the RDS radio, Bluetooth BT hands-free calling and music streaming, GPS navigation, phone mirror-link, steering wheel control, Wi-Fi, and compatible with external USB, SD card, the Android Auto/Apple CarPlay USB Dongle, DAB+ digital radio box, OBDII car scanner device, and backup camera. The display car radio is an Android 9.0, but Pumpkin has already released the Android 10 version car radio now. You can search on the Pumpkin official website.

See more information about [Pumpkin 7" Single Din Bluetooth Car Stereo with Flip Screen Navigation](#).

---

## Feature rich upgrade for older cars

RAM  
4GB

ROM  
64GB

# Android 9.0

## CAR STEREO



I have had this [Pumpkin 7" 2 Din 8 core car radio](#) installed in my 20-year-old Focus for a couple of months now. It's double din but it seems Fords version of double din is slightly different. I had to 'modify' the dash bezel to get it to fit, that is nothing against this device.

For the most part, it's been excellent, I'm far from an expert in installing something like this but have it running with all bells and whistles (Bluetooth, wifi, backup camera, etc.). Having it display battery voltage on the main screen has been incredibly valuable to learn and understand the power consumption.

I don't believe you can use this without the engine running for too many minutes before it bleeds too much juice from the battery, having a visual display of the voltage is so useful, it could just be my car and/or battery but it should be no

surprise it's more power-hungry than what was originally intended for my car. I have yet to look into possibly a larger battery to counter/accommodate it.

The other day the screen couldn't seem to make it minds up on brightness level and flicked levels every 10 or so seconds, that hasn't happened since, but it happened.

I am suspecting my starter motor may be on it's way out as the 'instant on' feature is proving somewhat unreliable whereas initially, it worked great. Again, I have a 20-year-old car and new to this type of install, to me, there may be calculable reasons for the above and I do not believe it's this device but rather my lack of knowledge and understanding. I say this as a caution to others, maybe get a professional to install and advise!

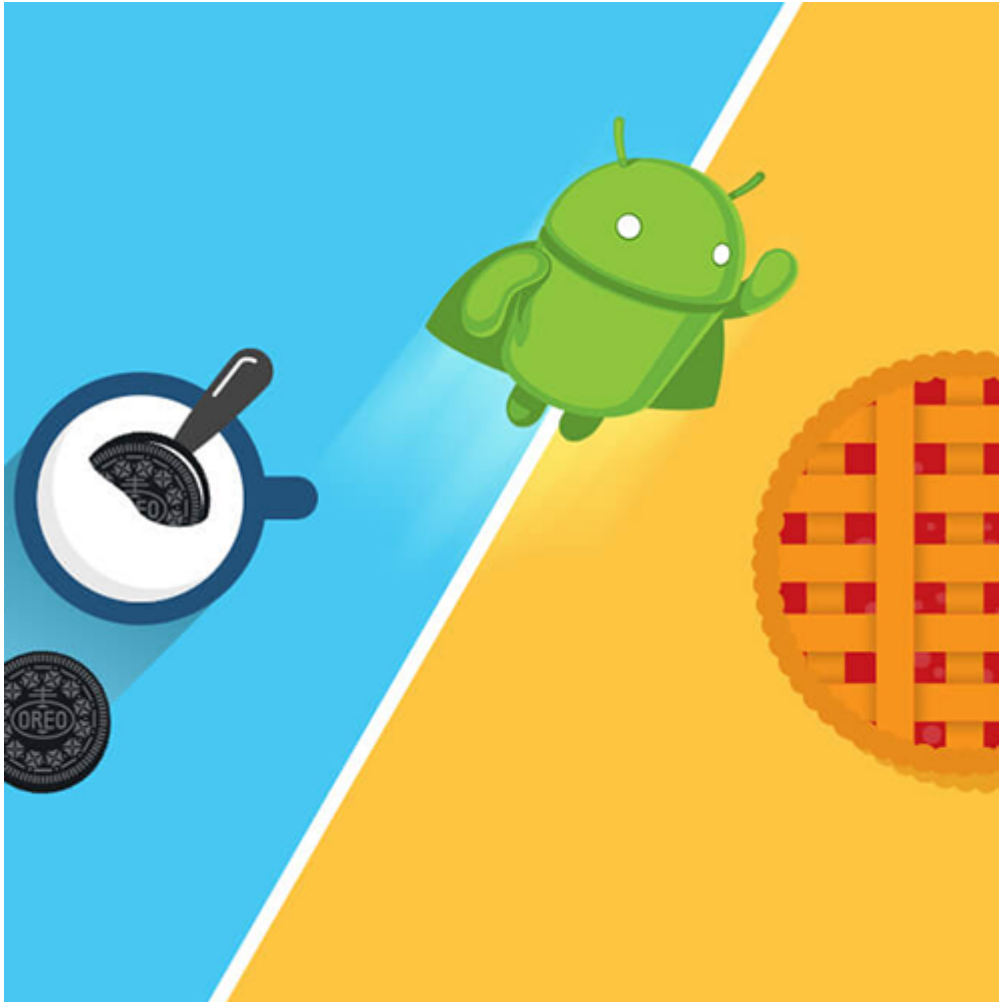
Other than that I'm really happy with it and it's a fraction the cost of a bigger name brand with all or more features and it's Android so massive potential in customization.

As for the design, having an actual volume dial was a key factor in me choosing this, the physical Home and Back buttons have also proven superior to the touchscreen options. One tiny gripe is the black outer bezel sticks out from the screen a touch too much, so when using the touchscreen on the top edge is a tiny bit awkward, but it's not that big a deal. I'm a bit of a fiend with devices, in hindsight, I would have liked 8 gigs of RAM, again not that big a deal.

Overall I very much recommend this device.

---

# What's the difference of Android 8.0 and Android 9.0 car stereo?



Android was released to the public for more than 10 years. The latest version is Android 9.0 now. The focal points of this latest Android version are its intelligence, simplicity, and a heap of new, advanced and convenient features. Android 9.0 is also the latest version in the Android car stereo. But what's new compared to Android 8.0? Let's run down some of the most important changes in Android Pie car stereos.

## Android 8.0 Oreo



## PUMPKIN CAR STEREO Android 9.0



### 1.Name

Android 8.0 is officially named Oreo, Android 9.0 is officially named "Pie".

### 2.Interface optimization

Compared to Android 8.0, Android 9.0 is more stripped-back now. The Android Pie is more colorful, with more curves for the system. And the edges have been softened.

### 3.Respond speed

Android 9.0 improves response speed a bit so that Android 9.0 car stereos can run smoothly and bring a quick response.

### 4.Software compatibility

Compared to Android 8.0, Android 9.0 can be compatible with more software. So it will not cause many software incompatibilities, flashbacks, etc.

### 5.System functions

Android 9.0 has added new features, like Google unified push upgrade, deep integration with Project Treble mode, more

closed and native support for call recording, etc. But maybe some features can not be used on car stereos.

---