

What is MirrorLink?

For those of whom want to utilize the best of your phone features with the car stereo, you need to notice the MirrorLink function that car stereos offer. MirrorLink makes it easy to bring the application of your phones to the car dashboard. MirrorLink is a way of 'mirroring' whatever is on your smartphone onto your car stereo display. No matter movies or maps, that all can be achieved with screen mirroring.

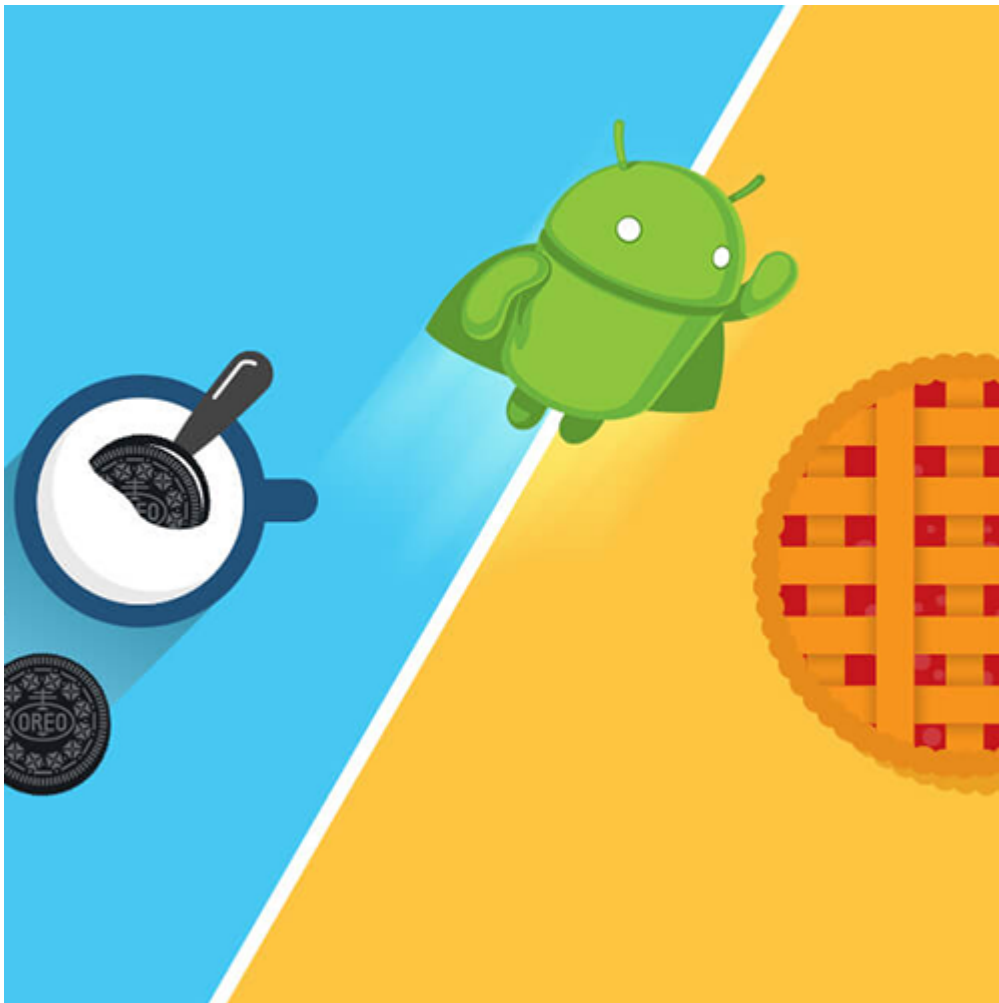
Our car stereos use a MirrorLink application called 'EasyConnection'. It is a driving assistant. This App integrates navigation, music, telephone, and other driving functions, you can also add your favorite applications to this App. With the interconnection of EasyConnection App on the navigator, the screen of the mobile phone can be projected onto the navigator screen and can be operated on the navigator screen. Any application can be made to work with MirrorLink, but not all applications should be used while driving. For example, you shouldn't play games or watch a movie while driving.



How does your screen mirror your phone to your car stereo? It is quite easy. Just open the EasyConnection application both on your car stereo and your phone. Then, choose the connect way you want on the car stereo. After connected, the apps will run on your smartphone while will be displayed on the car stereo monitor.

What's the difference of

Android 8.0 and Android 9.0 car stereo?



Android was released to the public for more than 10 years. The latest version is Android 9.0 now. The focal points of this latest Android version are its intelligence, simplicity, and a heap of new, advanced and convenient features. Android 9.0 is also the latest version in the Android car stereo. But what's new compared to Android 8.0? Let's run down some of the most important changes in Android Pie car stereos.

Android 8.0 Oreo



RAM
4GB

ROM
32GB

PUMPKIN CAR STEREO Android 9.0



1.Name

Android 8.0 is officially named Oreo, Android 9.0 is officially named "Pie".

2.Interface optimization

Compared to Android 8.0, Android 9.0 is more stripped-back now. The Android Pie is more colorful, with more curves for the system. And the edges have been softened.

3.Respond speed

Android 9.0 improves response speed a bit so that Android 9.0 car stereos can run smoothly and bring a quick response.

4.Software compatibility

Compared to Android 8.0, Android 9.0 can be compatible with more software. So it will not cause many software incompatibilities, flashbacks, etc.

5.System functions

Android 9.0 has added new features, like Google unified push upgrade, deep integration with Project Treble mode, more

closed and native support for call recording, etc. But maybe some features can not be used on car stereos.

The special function of car stereo-- DVD Player

Most car stereos on the market have the DVD player function, these car stereos have a DVD drive so that these devices can simultaneously play CDs and DVDs. It allows watching a movie on the integrated screen without an Internet connection. So this kind of car stereo is essential for a long journey and it can let you take a rest.

<https://blog.autopumpkin.com/wp-content/uploads/2019/12/AA0437B-xmas.mp4>

Car stereos with DVD drive also have external connections for monitors, with which screens on the back of the headrests can be supplied with moving pictures. In this way, they make it possible to offer passengers in the back seat a cinema while driving, as has long been the norm on planes. Especially for long vacation trips with children, this can soothe and quiet them.



[Pumpkin car stereo](#) also has external connections such as AV output, USB / SD card slot for the display. Through the external connections, the moving images can be transferred to the screen on the headrest. In this way, they make it possible to make a cinema available to the back seat passengers while driving. If your long vacation goes together with children, you will surely need this function.
