

Car Radio Doesn't Fit?

Factors & How

When a new [automotive radio](#) doesn't work properly, there are one or two of various factors which may be at work. If the new automotive stereo doesn't work as a result of it's the incorrect size, then a automotive radio work kit can facilitate in sure circumstances. for example, if you got a one DIN automotive radio to switch a 2 DIN automotive radio, then AN installation kit can do the trick. the other sometimes isn't true, though, and work kits will even cause problems in some circumstances wherever some [aftermarket automotive stereos](#) won't work into sure installation kits, and will cause a mussy looking dashboard.



When a replacement car radio doesn't match as a result of Size Matters

Factory car radio are available all kinds of freaky shapes and sizes nowadays, however there are 3 common kind factors for [aftermarket head units](#) that are all supported one DIN commonplace. The DIN commonplace for automobile radios specifies a height of 50mm and a dimension of 180mm, with no mention of depth.

Measured in inches, head units that adapt to the DIN commonplace are roughly 2" tall and 7" wide, despite the very fact that a hundred and eighty metric linear unit really converts to seven.08661 inches. that truly falls somewhere between seven 5/64" and seven 3/32", however there's sometimes enough flexibility that some hundredths of an in. here or there don't matter an excessive amount of.

The other 2 common head unit sizes are taken from the DIN commonplace. the most important is two DIN, that is just 4" tall and 7" wide, then there's the less common one.5 DIN, that is regarding 3" tall and 7" wide.

Just watching those 3 common automobile car radio sizes, it's simple to determine however you'll find yourself with match problems at a awfully basic level. Head units engineered to the two DIN or 0.5 DIN specifications merely won't slot in a slot meant for a one DIN head unit, and attempting to place a one DIN stereo within the house afforded a two DIN OEM unit can leave an unpleasant, open hole.

Solving automotive Radio match issues With Installation Kits

In most cases, the answer to a replacement automotive radio that doesn't match could be a automotive stereo installation kit. in contrast to aftermarket head units, that are platform agnostic and designed to figure during a wide selection of cars and trucks, every installation kit is purpose-made for a awfully specific vary of makes or models.

The classic use for a automotive radio installation kit is to permit a one DIN aftermarket radio to suit into a touch that came with a a pair of DIN or one.5 DIN manufacturing plant stereo. this sort of kit includes a slot and mounting hardware which will match any one DIN aftermarket radio, whereas conjointly fitting utterly into the dash of the particular create, model, and year of your vehicle. In several cases, this sort of kit also will embody a storage pocket to create use of the additional space.



When a automotive Radio Won't slot in associate Installation

Kit

Despite the very fact that aftermarket radios adapt nearly uniformly to one DIN, 1.5 DIN, 2 DIN dimensions, there are circumstances wherever you'll realize that associate aftermarket head unit doesn't truly slot in associate installation kit that it's meant to figure with. this can be typically thanks to the slight distinction between the particular DIN customary, that is measured in millimeters, and therefore the accepted North American nation customary, that is given in inches since they don't match exactly.

If associate installation kit from one manufacturer doesn't work together with your new head unit, there's a decent likelihood that a kit from a unique manufacturer can. This isn't a very common prevalence, however if the build and model of your automotive is comparatively common or standard, you may usually be ready to depart potential problems by trying out net forum conversations to determine if anyone together with your specific automotive has full-fledged problems with a specific automotive stereo kit manufacturer within the past.

In some cases, it's additionally that aftermarket head unit add associate ill-fitting install kit—or make associate ill-fitting install kit slot in the dash of your car—by shaving off a small little bit of material with a dremel tool, however that goes on top of and on the far side what most of the people are willing to just accept once putting in a replacement automotive radio.

Making Sure That a automotive Radio can work

If you've already bought a replacement automotive radio, and you either can't or simply don't need to come back it, then you're visiting be stuck attempting to seek out a way to form it work. For those that haven't nonetheless force the trigger on a replacement head unit, there are some ways that to form

positive that the new radio are a decent work.

In several cases, the simplest way to confirm that a replacement automotive radio goes to suit is to truly live the recent automotive radio. Since most radios are either [one DIN](#), 1.5 DIN, or [2 DIN](#), this is often really pretty simple to simply eyeball. however to form positive, you'll simply pull out a measuring device and check. If it's concerning 2" tall, then it's a one DIN, if it's concerning 3" tall it's a one.5 DIN, and if it's concerning 4" tall it's a two DIN.

If you're shopping for a replacement automotive stereo as a present and don't have access to the vehicle, or if the dash is meant in such some way that it's tough to inform at a look however tall the stereo is, then the safest way to confirm you get the correct size replacement unit is to consult a work guide.

Most automotive stereo retail stores will facilitate your with this, however the knowledge is additionally offered on-line from retailers like Crutchfield and Sonic Electronix. employing a work guide from a estimable on-line merchandiser doesn't need you to truly get from that merchandiser, thus it's a decent way to get an inspiration of what's going to really slot in your automotive no matter wherever you finish up shopping for your new head unit from.

[Essential Safety Features:](#) [Car DVD Players](#)

If you're in the market for a new car and you can afford a fully-loaded top-end model with all the bells and whistles, that's great. But for the average Joe (or Jane), the price is

a consideration and it's difficult to sift through all the jargon car salesmen confuse you with. So, what are the essential safety features in cars that prevent accidents? Which new auto technologies are pure gimmicks and which ones save lives? Here are some essential safety features your car should have.

Airbags



Even the least expensive cars these days have at least two front airbags. In the event of high-speed or high-impact collisions, airbags are only second to seat belts in saving the lives of front seat passengers. The latest auto technologies include airbags that deploy on the windscreen of the car to protect a pedestrian who may get hit while crossing the street.

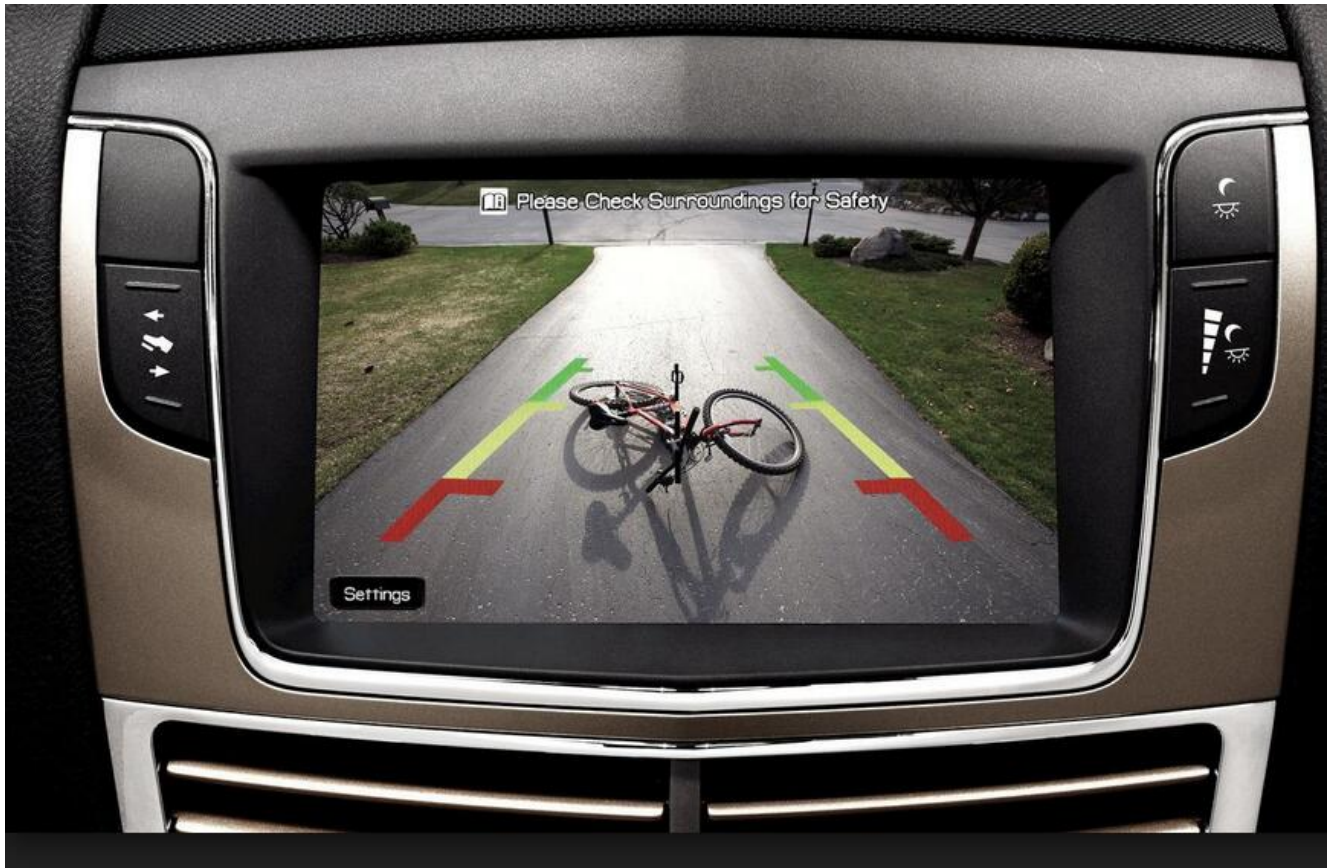
Back-Up Camera

A dashboard display of what's behind the vehicle comes on as

soon as you put your car in reverse. Some back-up cameras include trajectory lines and distance readings to help you navigate, but more importantly, this technology prevents you from inadvertently running someone over (there have been instances when a parent backed up a large SUV over their own toddler in their own driveway). The National Highway Transportation Safety Administration (NHTSA) will make back-up cameras compulsory in all vehicles by 2018.

Fatigue **Detection** **Systems**





Drivers drifting off to speed are a danger to themselves as well as others on the road. New car technologies detect erratic driving, such as sudden deceleration or drifting, and warn the driver with an audio or visual alert. This safety feature is especially important for people who spend long hours on the road alone, such as truck drivers. More expensive models in passenger cars are able to profile a driver's normal driving patterns and quickly detect any deviation from the baseline, even factoring in external factors such as road surface and crosswinds.

Parental Controls

Parents of teen drivers can rest a little easier when their young driver heads out of the door with car keys in hand. Parental control technology for safety in automobiles allows parents to place limits on the vehicle's speed and audio volume. The system can also be programmed to sound a continuous alarm if seat belts remain unfastened after the vehicle begins moving. GPS vehicle tracking allows parents to

track the vehicle in real time.

Blind Spot Detector

If you've ever started to switch lanes but jerked back into your lane because a car was in your blind spot, you'll know the value of a new technology called blind spot detector. This feature sets off an audio or visual alert if there's a car in the driver's blind spot. Some systems can also detect bicycles and pedestrians outside the driver's field of vision.

Car DVD Players:



Nowadays, there isn't a home without a [car DVD player](#), but one of the latest and coolest ways to electronically enhance your life is installing one into your car! Car DVD players come in all different varieties and prices, but even the cheapest ones will send you into movie viewer heaven!

View more products at our global online store:
<http://www.autopumpkin.com/>

UK store: <http://www.autopumpkin.co.uk>

DE store: <http://www.autopumpkin.de/>

Tips On Installing Android BMW Navigation System DVD Player

More and more BMW X5 E53 owners prefer to upgrading the factory car stereo with an aftermarket one which has DVD player and GPS navigation system built-in, such as [Pumpkin Android BMW navigation dvd](#), [wince 6.0 BMW navigation car dvd](#). And some of these people would like to install the new replacement by themselves, but there may be some problems during installation if you have never installed an aftermarket car gps dvd palyer before. We write this post to introduce you some tips on installation of Pumpkin [android 5.1 BMW Car Navigation GPS DVD Player](#).

If your BMW X5 e53 just comes with factory car radio and CD player in dash, there's a plastic cage inside of the dashboard as you can see after you take out the factory radio and CD, if you don't remove this cage, you may think it does not fit into the opening of the original entry, the new BMW navigation dvd unit can not be pushed entirely into the dashboard, see pics below:



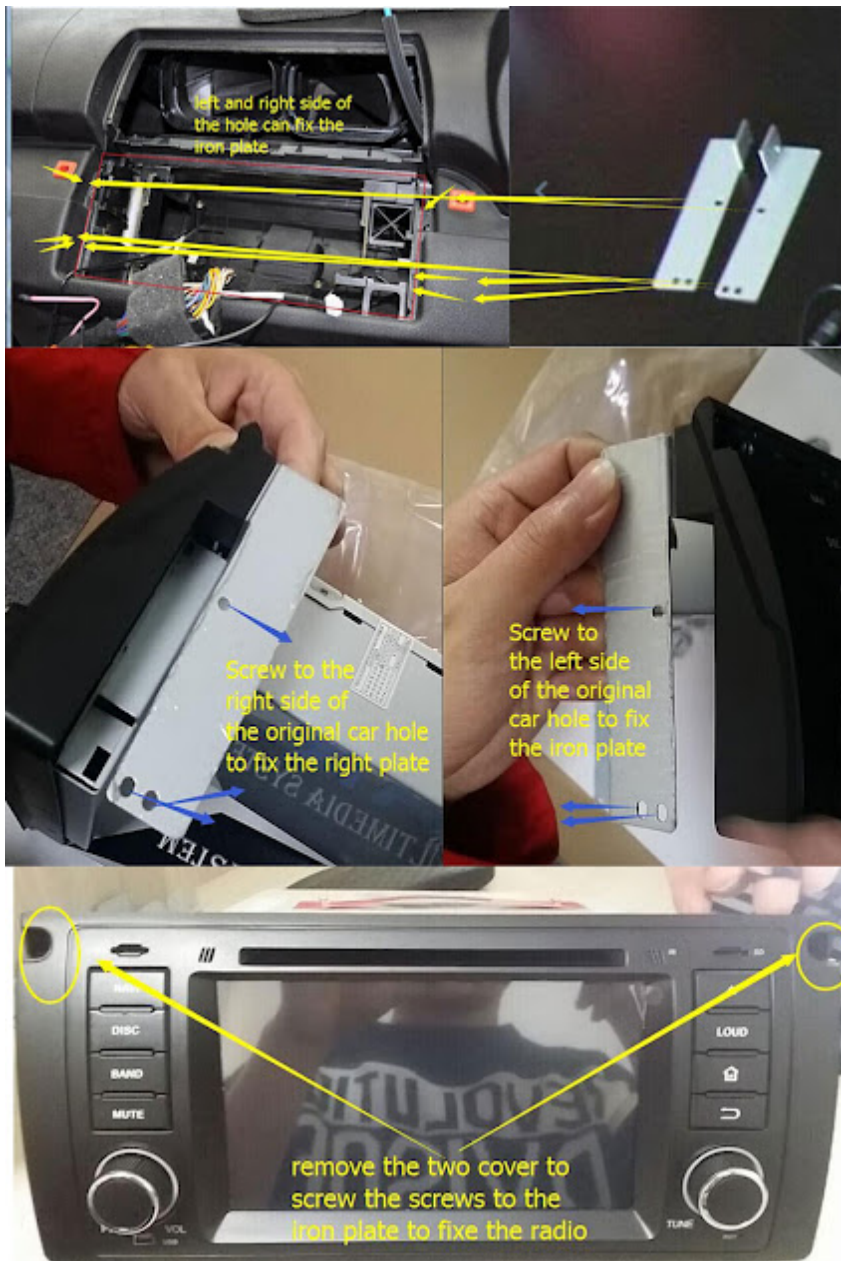
Don't worry, there are two methods which can allow you to push the new BMW X5 navigation car dvd into the dashboard fully. Some installers just cut the plastic cage, and others remove it.

In order to remove the plastic cage, firstly take off the 4 screws that hold the cage in place, 2 on the right side, and 2 on the left side (same as right side). The following pictures are for your reference:



You need to pull down and slightly left the dash part which is close to the steering wheel. When you are doing this, use your other hand to push down in the middle of the opening where the cage is, and as you opened/pulled the dash/trim this far, you are able to hold it with one hand in this position and start wiggling the cage with your other hand. When are doing this, some force is necessary, but not too much. Once you start playing with it, you will get the jest on how to pull out the hooks, then as you have the left hook out, you now pull to a side and down on the right side (glove compartment side) to clear the other hook.

Once you removed the plastic cage, you are able to push into the new unit into the dash fully. And you will need to use the included iron frame support to fix the new unit to the dash, you may check the following photo as reference.



If your BMW X5 E53 comes with factory navigation system, there's a large screen in the dash, the 17pins(before year 2002) or 40pins(after year 2002) plug is not at the back of your factory radio, it's located under the trunk, so you need to use a 5m long power cable with 17pins or 40pins plug to connect the correct plug under the trunk.



The following video may help you about that!

Click to check [Pumpkin BMW Car Navigation DVD Players](#).

Click to check [Pumpkin Android 5.1 BMW car GPS DVD palyer](#).

Pumpkin official websites:

US site: www.autopumpkin.com

UK site: www.autopumpkin.co.uk

German site: www.autopumpkin.de
