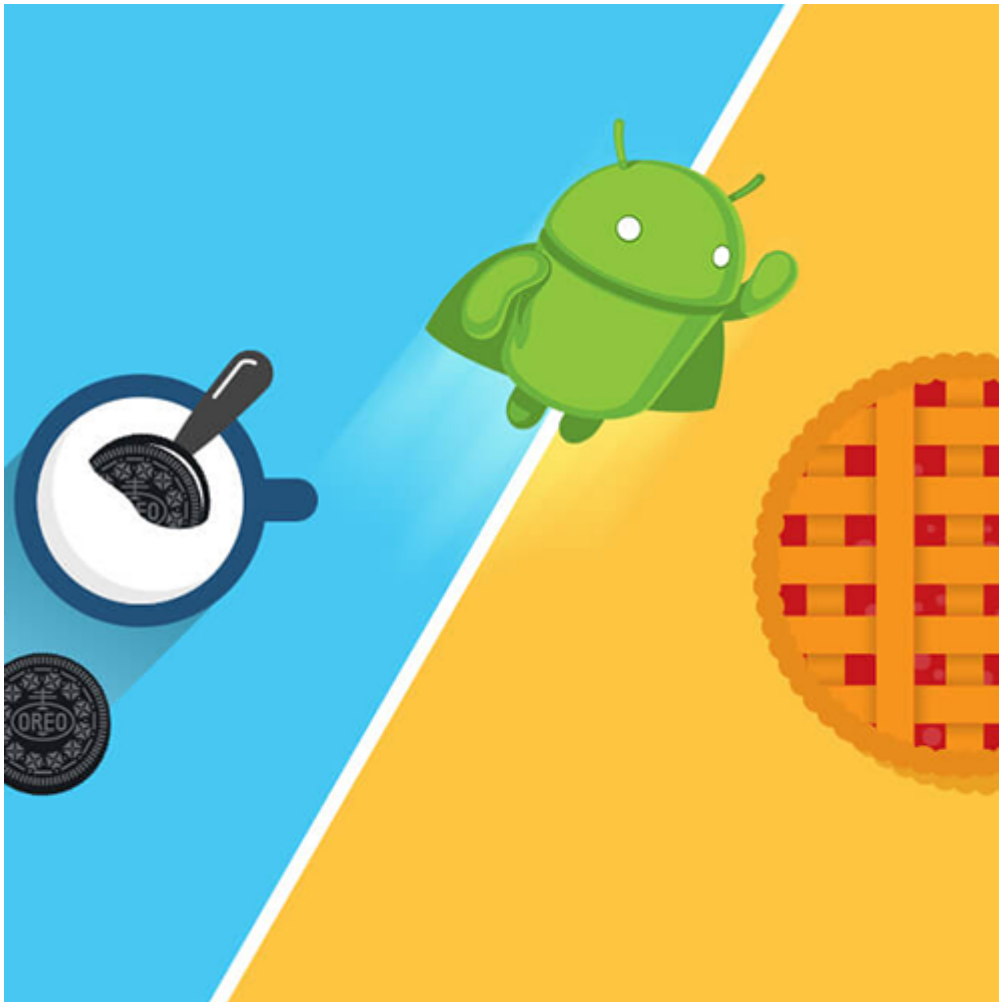


# What's the difference of Android 8.0 and Android 9.0 car stereo?



Android was released to the public for more than 10 years. The latest version is Android 9.0 now. The focal points of this latest Android version are its intelligence, simplicity, and a heap of new, advanced and convenient features. Android 9.0 is also the latest version in the Android car stereo. But what's new compared to Android 8.0? Let's run down some of the most important changes in Android Pie car stereos.

## Android 8.0 Oreo



RAM  
4GB

ROM  
32GB

## PUMPKIN CAR STEREO Android 9.0



### 1.Name

Android 8.0 is officially named Oreo, Android 9.0 is officially named "Pie".

### 2.Interface optimization

Compared to Android 8.0, Android 9.0 is more stripped-back now. The Android Pie is more colorful, with more curves for the system. And the edges have been softened.

### 3.Respond speed

Android 9.0 improves response speed a bit so that Android 9.0 car stereos can run smoothly and bring a quick response.

### 4.Software compatibility

Compared to Android 8.0, Android 9.0 can be compatible with more software. So it will not cause many software incompatibilities, flashbacks, etc.

### 5.System functions

Android 9.0 has added new features, like Google unified push upgrade, deep integration with Project Treble mode, more

closed and native support for call recording, etc. But maybe some features can not be used on car stereos.

---